

More Information

 C&U Bearing Website
www.cugroup.com

C&U® BEARINGS

C&U
Cooperation and Unity

C&U Group Shanghai Bearing Co., Ltd.
Sales Headquarter
Address: Lane 1155, Shenzhou Road, Fengxian District, Shanghai
Postcode: 201411
Tel: 400-820-3393
Mail: cuit@cugroup.com

* All information has been carefully compiled and checked, but we cannot accept any responsibility for possible errors or omissions. The copyright for the contents of this publication belongs to the publisher and may not be reprinted or excerpted without prior written permission.



C&U / 202311 / Shanghai



AGRICULTURAL MACHINERY



C&U COMPANY LIMITED

- 1. C&U ranks as China’s largest bearing manufacturer and is among the top 10 global bearing producers.
- 2. In 2022, C&U's bearing division reported a turnover of 1.235 billion euros and employed 14,044 individuals.
- 3. C&U offers a comprehensive range of bearings, including ball, taper, cylindrical, needle, spherical, thrust ball, slewing, water pump, and wheel hub bearings, alongside specialized automotive and industrial designs.
- 4. Bore sizes ranging from an inner diameter of 1mm to an outer diameter exceeding 6,000mm, encompassing over 30,000 unique part numbers.
- 5. C&U has been instrumental in establishing or contributing to over 34 national bearing industry standards and boasts over 2,030 patents in China.
- 6. C&U offers maximum flexibility on the products for our customers. The bearings are designed according to the needs of the customer's application.

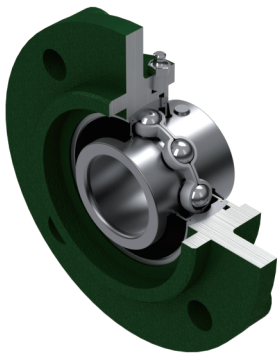
In this brochure we focused on some C&U product solution examples used in the Agriculture and Forestry segment.

The Bearing Specification Table is detailed in the Rolling Bearing General Catalogue



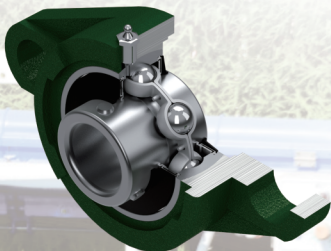
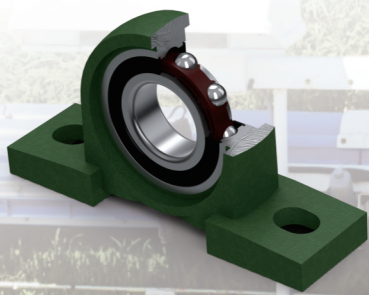
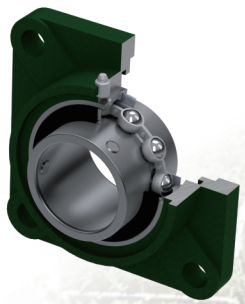
C&U Global Presence

						<div></div>	<div></div>	<div></div>	<div></div>	<div></div>	<div></div>
<div>H&Q</div>	Headquarters	1	<div></div>	Production Bases	8						
						Germany	1		1	1	
						China	1	1	17	7	8
<div>R&D</div>	R&D Centers	1	<div>Sale</div>	Sales Companies	20						
						Japan	1		1	1	
						America	1		2	1	
<div></div>	Warehouses	13	<div>E&C</div>	Engineering Center	4						
						Philippines	1		1	1	

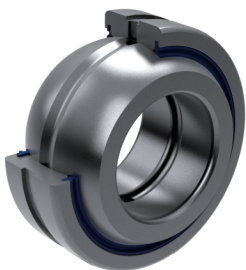


Insert Ball Bearing Unit

The ball bearing insert, and mounted unit features high radial bearing capacity in a compact design, facilitating straightforward installation and removal. This type of ball bearing unit, with its spherical outer ring, compensates for any misalignment between the shaft and the unit. Tailored for specific uses, particularly in areas prone to contamination such as farming equipment, this unit incorporates diverse sealing designs to excel in the most challenging applications.



The Bearing Specification Table is detailed in the Rolling Bearing General Catalogue



Spherical Plain Bearing

Spherical plain bearings can handle increased radial loads with automatic self-aligning feature, enabling them to endure significant shaft or housing misalignments. By incorporating seals on both ends, they can operate maintenance-free and efficiently prevent the entry of external contaminants.



Deep Groove Ball Bearing

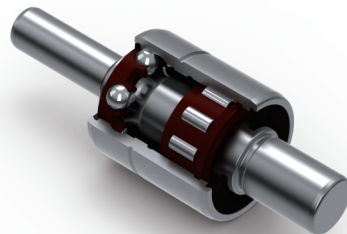
The deep groove ball bearing is known for its low noise and high precision. It has a broad range of uses and well-established manufacturing processes. Additionally, it can handle a significant radial load with a moderate axial load.



Spherical Roller Bearing

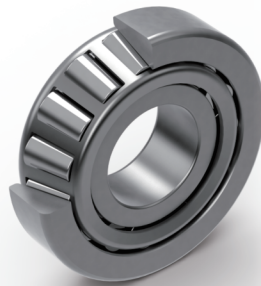
The spherical roller bearing has the capacity to handle both high radial loads and axial loads simultaneously. Additionally, it features an auto-aligning capability, making it tolerant of significant shaft or housing misalignments.

The Bearing Specification Table is detailed in the Rolling Bearing General Catalogue



Water Pump Shaft Bearing

Integral shaft water pump bearing, characterized by its compact internal structure, offers a substantial bearing capacity, excellent rotational accuracy, and effective sealing performance. It finds extensive applications in various types of engine pumps.



Tapered Roller Bearing

The tapered roller bearing features substantial bearing capacity and robust rigidity. Capable of supporting both radial and axial loads simultaneously, it's frequently employed in gearboxes of agricultural machinery.

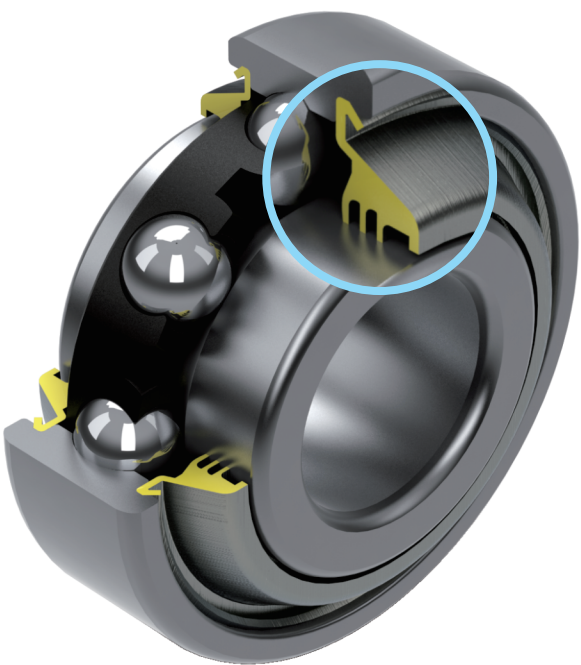


Needle Roller Bearing

Needle roller bearings feature a compact internal design and offer a substantial radial bearing capacity. They are extensively utilized in agricultural machinery gearboxes, especially when there are constraints on available radial space.

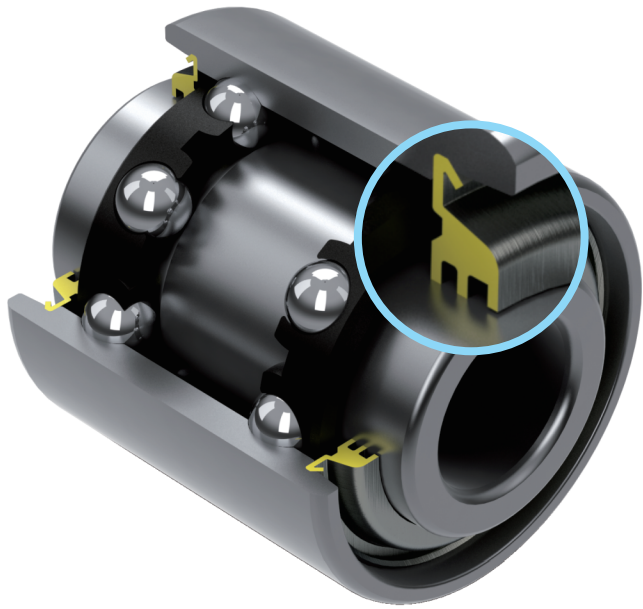
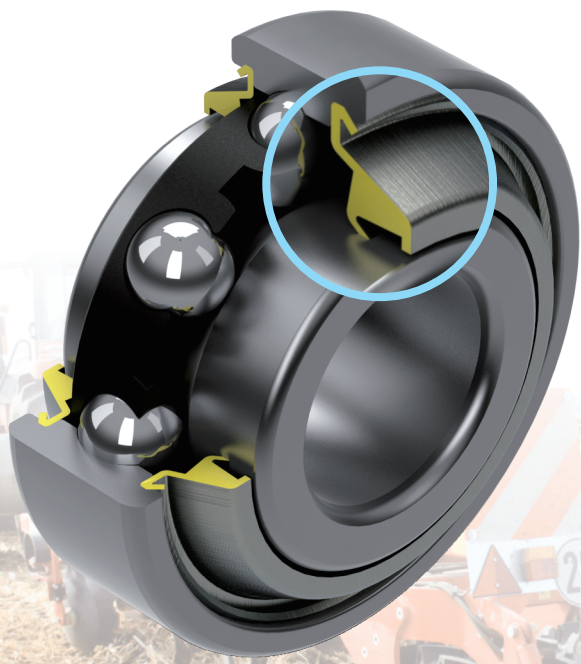
The Bearing Specification Table is detailed in the Rolling Bearing General Catalogue

The Bearing Specification Table is detailed in the Rolling Bearing General Catalogue



**Single Row
Sealed Deep
Groove Ball
Bearing**

The single-row sealed deep groove ball bearing is known for its high precision, low noise, and excellent sealing properties. This design features a multi-lip sealing structure on both sides, making it suitable for agricultural applications with highly contaminated environments.



**Double Row
Angular Contact
Sealed Ball
Bearing**

Sealed double-row angular contact ball bearings can support both radial and axial loads simultaneously. This design is equipped with multi-lip seals on both sides, suitable for environments with high contamination, such as in agricultural machinery.

